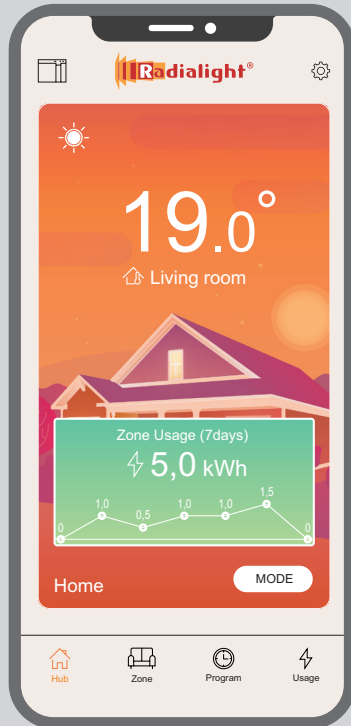




Wi-Fi APP



Quick Start Guide

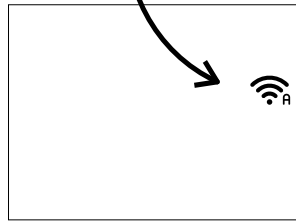
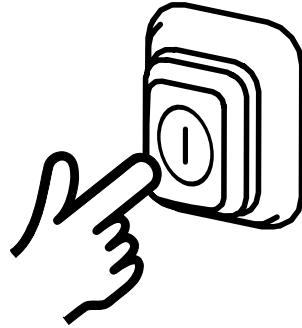
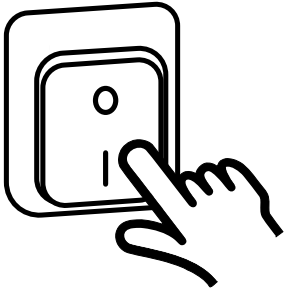


(version 11.0 or later)



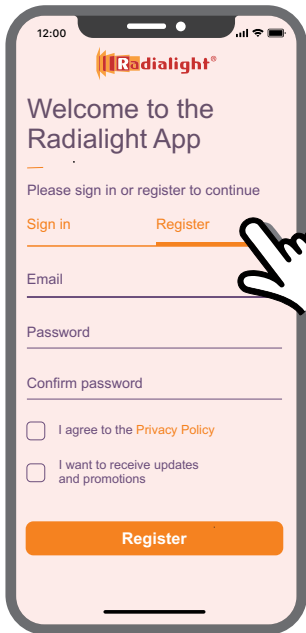
Klima / Icon

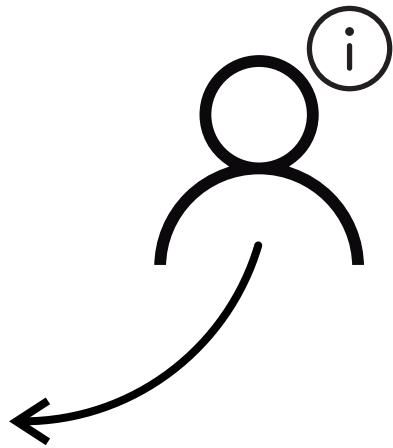
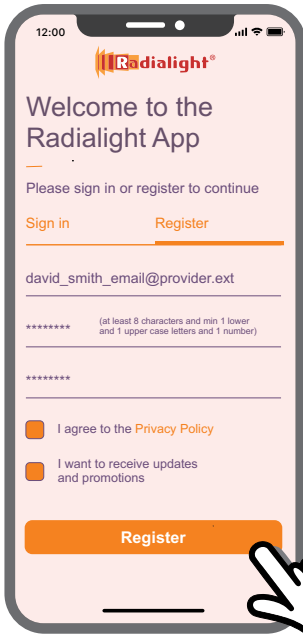
Kyoto / Aetherea



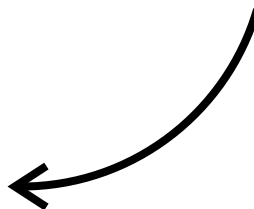
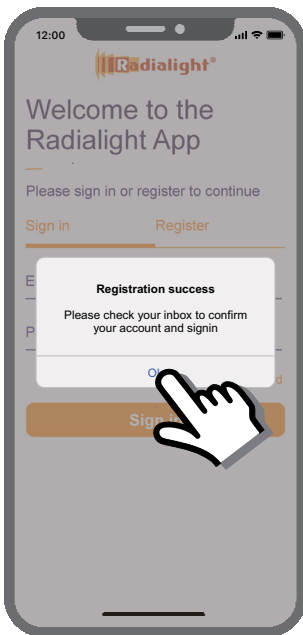
Wi-Fi 2,4GHz IEEE 802.11 b/g/n
WEP/WPA/WPA2

~~Wi-Fi 5,0GHz~~



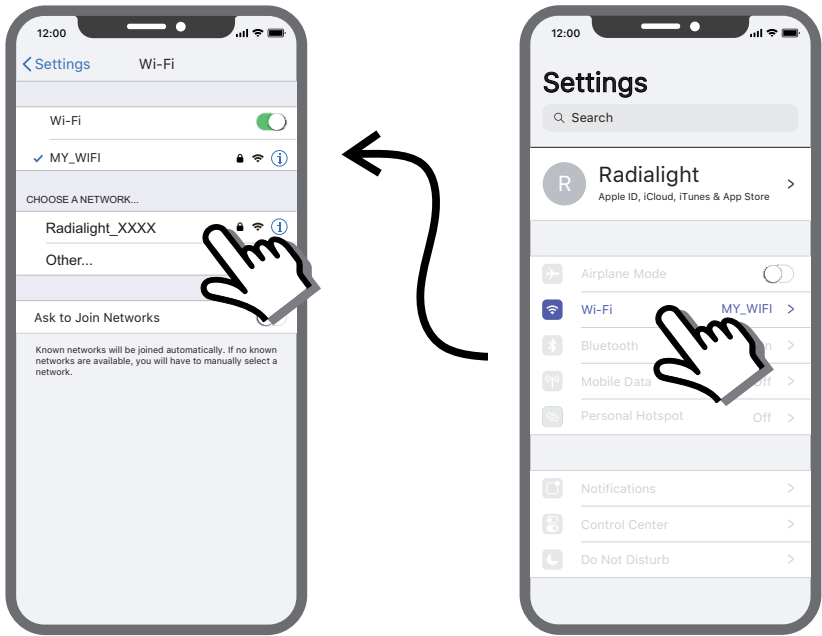


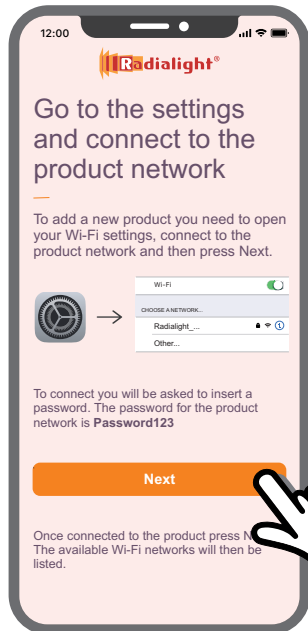
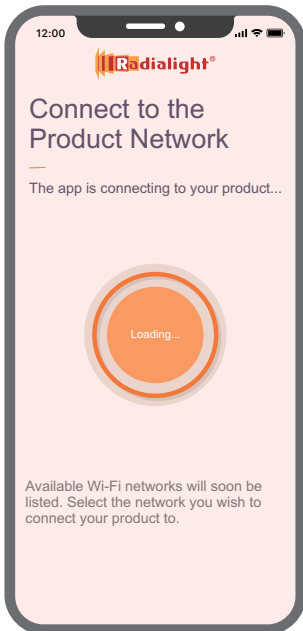
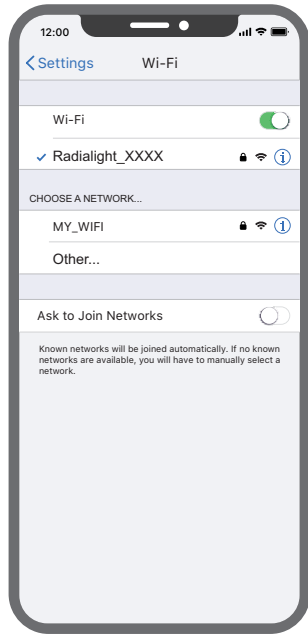
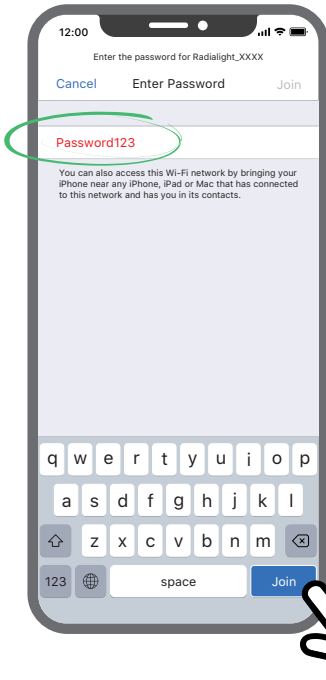
Check your e-mail and click the confirmation link. Then press Ok and sign-in

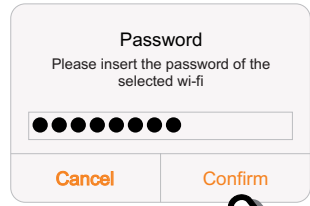
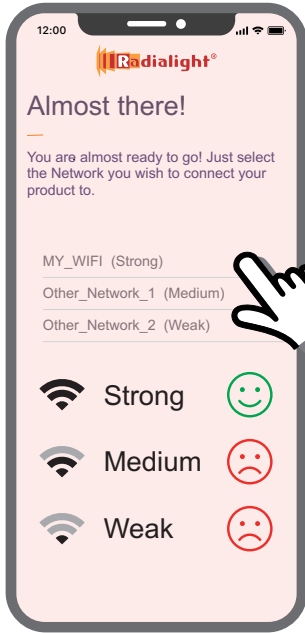



Missing email?

Have you checked your SPAM folder?

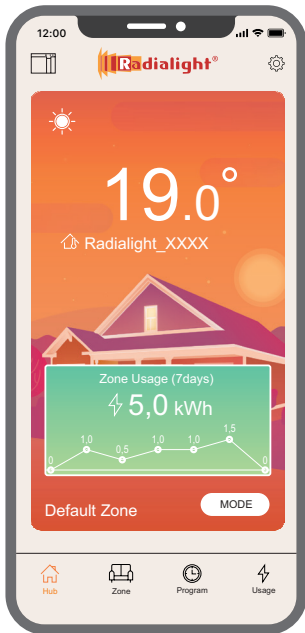
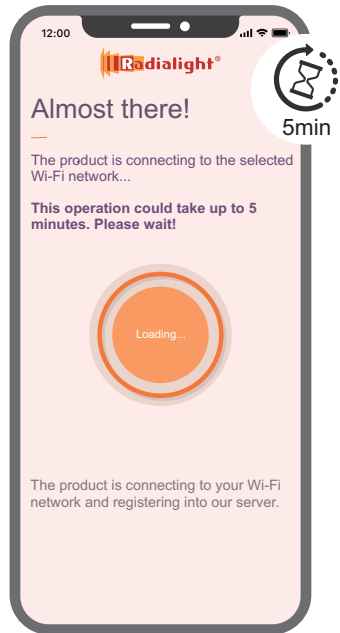






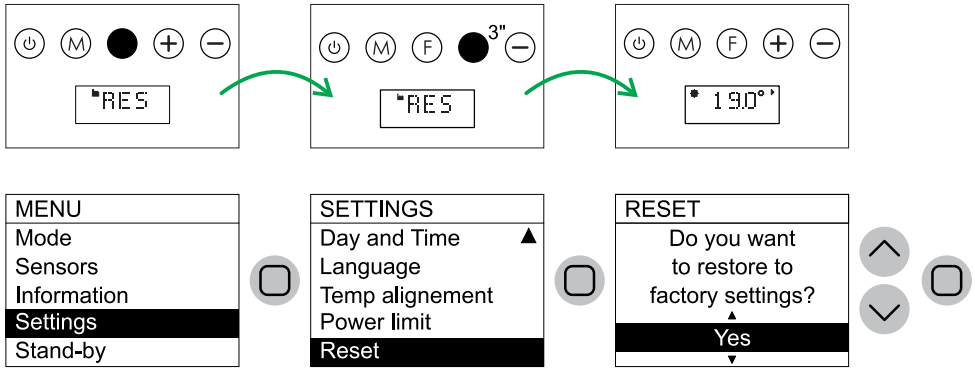


Wi-Fi name and password:
Max 30 characters not including the comma ",", the equal sign "=" or the question mark "?"

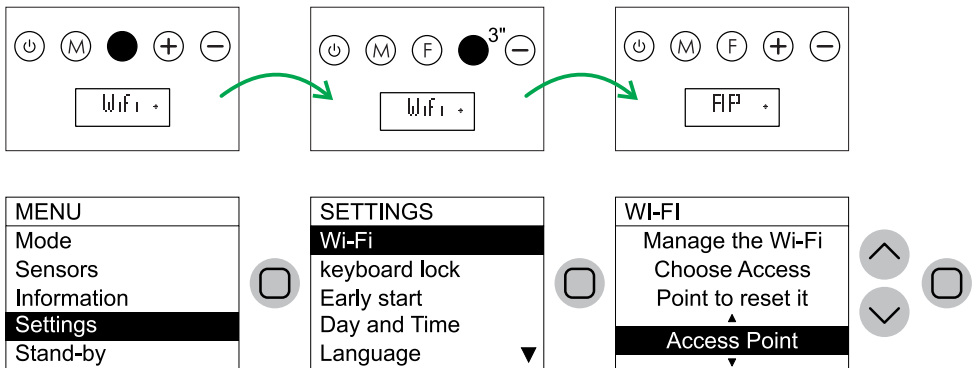


UNABLE TO REGISTER YOUR PRODUCT? Try this:

1 - Reset the heater (depending on the model)



2 - Set the Wi-Fi to Access Point mode (depending on the model)



3 - Turn OFF the heater with the switch on the right side

4 - Close the App

5 - Open the App

6 - Switch ON the heater and wait 30"

7 - Try again to add the product



www.radialight.com/app-support

ISAPP002_R5